



Worm Drive Slewing Rings



Worm Drive Slewing Rings are compact units, which consist of a slewing ring worm gear, worm and housing.

The worm drive slewing rings provide an economical and compact solution with low maintenance costs.

The unit offers high output torque with radial and axial load carrying capacity suitable for slow rotation with continuous or cyclical movements.

We offer these drive units in **4 sizes** with torque ratings of **1,500 to 15,000 Nm**.

The worm is hardened and ground. The housing is available in **open or enclosed gearing** as per customer specifications. The slewing ring raceways are hardened.

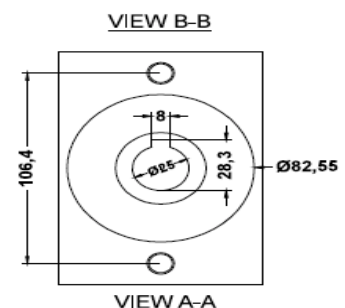
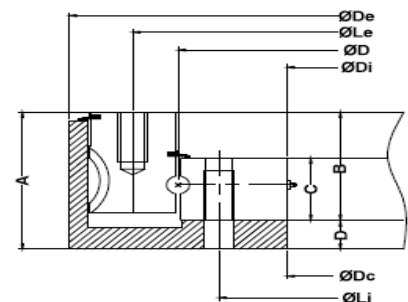
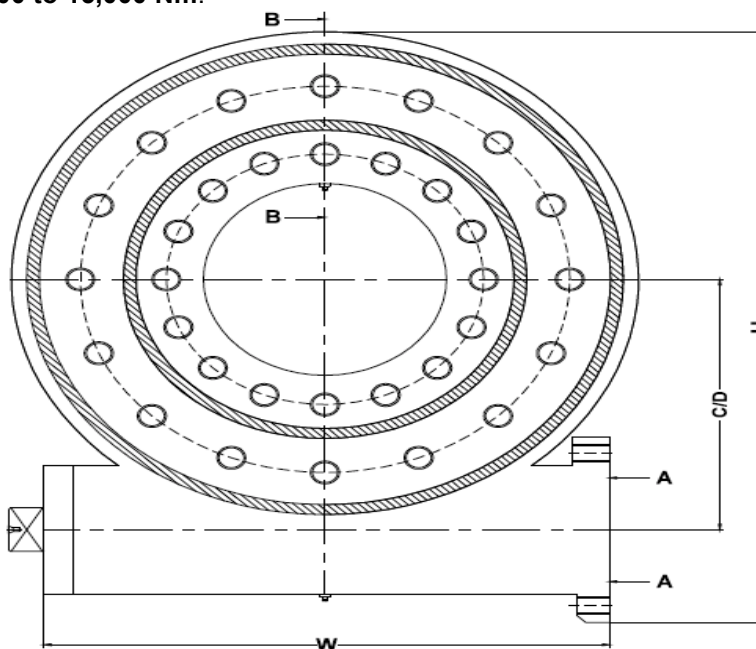
The unit is available with **mounting flanges for hydraulic motors**. Adaptors are available for electric motors.

Applications: The worm drives are used in truck cranes, oil tool equipment, fixture tables, marine cranes, tire handlers, solar panel rotation, fork lifts, boom trucks, man-lifts and many other applications.

Customization: Modifications to ratio, hole dimensions of slewing ring worm gear, material of construction, motor mount positioning, material hardening according to customer specifications, adaptors for encoders.

The slew drives are filled with grease upon delivery. To warrant trouble-free operation of the slew drive, regular re-greasing is necessary.

Model	Ratio	Nominal Torque (Nm)	Maximum Torque (Nm)
WA	64:1	1300	2000
WB	60:1	4795	9300
WC	85:1	8175	18275
WD	103:1	10050	20000



Model	Dimensional Data											Ratio	Bolt Data			
	φD	φDe	φDi	φDc	C/D	H	W	A	B	C	D		φLe	Ne	φLi	Ni
WA	142	213	69.5	72	120.65	269	215.5	67	41.6	36.3	25.4	64:1	172	10	95.25	12
WB	222.5	346	135	134	175	413	312	86	66	44	20	60:1	270	16	175	16
WC	340	460	221	220	237.6	532	343	96	76	44	20	85:1	390	18	295	24
WD	420	552	305	300	282.5	624	390	101	83	51	18	103:1	479	20	365	20

*All Dimensions in mm / *Dimensions are subject to Change

*Larger Sizes Available on Request

Office: 13, Jor Bagh, New Delhi - 110003, India, Tel: +91 (011) 24621453

Works I: Plot 65, Sec. 27C, Faridabad – 121003, India, Tel: +91 (0129) 4279001, Fax: +91 (0129) 4279009

Works II: Plot 69, Sec. 27A, Faridabad – 121003, India, Tel: +91 (0129) 4015951

Email: info@involutetools.com URL: www.involutetools.com / gears-reducers.com